

TUSCO TIMES

OFFICIAL NEWSLETTER OF THE TUSCO LONG RIDERS

"The Shooting Makes It Fun, the People Make It Special"

February 2024

Writer/Editor: Prairie Dawg

In this Issue

February Monthly Shoot Results
High Noon at Tusco 2024 Information
Old West Boomtowns -- Bodie, California
"Popcorn Kelly" podcast and YouTube video series
Cowboy Swap Meet

**Next Shoot:
March 2, 2024**



The Tusco Long Riders February, 2024 Monthly Shoot Results

Thanks to the 21 shooters that came out to Tusco on a crisp, sunny midwinter day!
We were out on the new concrete pad on stages 4 & 5, and, once the sun came out, it was really pleasant!

Congrats to Boaz our Top Overall Shooter!

Thank you to everyone who helped setup and tear down! Appreciate the help!!

1.	Boaz	49er	109.50
2.	Lucky 13	Elder Statesman	120.18 CLEAN
3.	Hooligan Howes	Gunfighter	160.74
4.	Buckaroo Bubba	Duelist	164.32
5.	Life-R	Josey Wales	166.28
6.	Stone Creek Drifter	FC Duelist	171.44
7.	Loquacious Loner	FC Gunfighter	189.48
8.	Buckshot Charlie Bill	49er	190.99

9.	N.A. Custer	SS Gunfighter	195.97
10.	Turkey Flat's Jack	Gunfighter	206.91
11.	Cheatin Charlie	Cattle Baron	214.53
12.	Split Rail	Gunfighter	221.23
13.	Frontier Lone Rider	Cattle Baron	221.55
14.	Whiskey T. Foxtrot	Gunfighter	228.33
15.	Moosetracks	Senior Duelist	250.33
16.	Mad Eye Mark	Gunfighter	255.51
17.	Rootin Tootin Dan	Gunfighter	258.59
18.	Roscoe Wrangler	49er	304.40
19.	Lawless Lorin	Senior Duelist	308.77
20.	Prairie Dawg	FC Duelist	316.06 CLEAN
21.	Saddlemaker	Cattle Baron	419.94



**High Noon at Tusco 2024 Dates
September 27th-29th, 2024
This is to avoid a conflict with
Land Run -- The SASS National Championship
Mark Your Calendars!!**



Howdy Tusco Long Riders

Announcing a new Cowboy Action Shooting podcast titled “*Up Next With Popcorn Kelly.*” My goal in creating this podcast is to provide a broader look at cowboy action shooting than what my current format allows. While *Up Next* will still focus on Illowa Irregulars’ activities, this new format allows me to include a broader range of topics than my current stage video-focused format allows. I anticipate each episode will be shorter and more focused than my traditional videos.

PLATFORMS: The podcast will be available on two platforms – YouTube Podcasts as well as on my YouTube Channel.

SUBSCRIBE: The best way to ensure you are kept apprised when new episodes are released is to subscribe to either the [Up Next podcast](#) or Popcorn Kelly’s [YouTube Channel](#).

Popcorn Kelly
Illowa Irregulars Cowboy Action Shooting Club
Milan, Illinois



Prairie Dawg's Old West Chronicles

A Compendium of Useful Information

February, 2024

Old West Boomtowns --Bodie, California

Bodie is a ghost town in the Bodie Hills east of the Sierra Nevada mountain range, in Mono County, California. It is about 75 miles southeast of Lake Tahoe, and 12 miles east-southeast of Bridgeport, at an elevation of 8,379 feet. Bodie became a boom town in 1876, after the discovery of a profitable vein of gold. By 1879, it had established 2,000 structures with a population of roughly 8,000 people.

Bodie went into decline in the subsequent decades, and came to be described as a ghost town by 1915. Today, Bodie has been recognized by The U.S. Department of the Interior, and is designated as a National Historic Landmark, called the Bodie Historic District.

Bodie is also registered as a California Historical Landmark, and the ghost town officially was established as Bodie State Historic Park in 1962.



Bodie began as a mining camp of little note, following the discovery of gold in 1859, by a group of prospectors, including W. S. Bodey. Bodey died in a blizzard the following November, while making a supply trip to Monoville, near present-day Mono City, never able to see the rise of the town that was named after him. According to area pioneer Judge J. G. McClinton, the district's name was changed from "Bodey," "Body,"

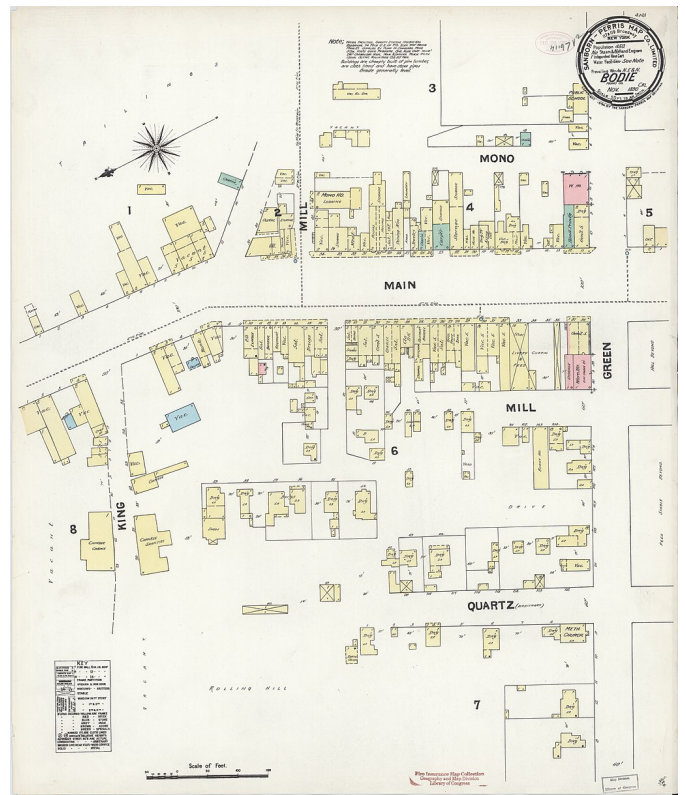
and a few other phonetic variations, to "Bodie," after a painter in the nearby boomtown of Aurora, lettered a sign "Bodie Stables".

Gold discovered at Bodie coincided with the discovery of silver at nearby Aurora, Nevada, and the distant Comstock Lode beneath Virginia City, Nevada. But, while these two towns boomed, interest in Bodie remained lackluster. By 1868, only two companies had built stamp mills at Bodie, and both had failed.

Gold Boom

In 1876, the Standard Company discovered a profitable deposit of gold-bearing ore, which transformed Bodie from an isolated mining camp, comprising a few prospectors and company employees, to a Wild West boomtown. Rich discoveries in the adjacent Bodie Mine during 1878 attracted even more hopeful people. By 1879, Bodie had a population of approximately 7,000 – 10,000 people, and around 2,000 buildings.

One legend says that in 1880, Bodie was California's second or third largest city, but the U.S. Census of that year disproves this. Over the years 1860 – 1941 Bodie's mines produced gold and silver valued at an estimated \$34 million (in 1986 dollars).



Bodie boomed from late 1877 through mid-to-late 1880. The first newspaper, *The Standard Pioneer Journal of Mono County*, published its first edition on October 10, 1877. Starting as a weekly, it soon expanded publication to three times a week. It was also during this time that a telegraph line was built which connected Bodie with Bridgeport, California and Genoa, Nevada. California and Nevada newspapers predicted that Bodie would become the next Comstock Lode. Men from both states were lured to Bodie by the prospect of another bonanza.

Gold bullion from the town's nine stamp mills was shipped to Carson City, Nevada, by way of Aurora, Wellington, and Gardnerville. Most shipments were accompanied by armed guards. After the bullion reached Carson City, it was delivered to the mint there, or sent by rail to the mint in San Francisco



As a bustling gold mining center, Bodie had the amenities of larger towns, including a Wells Fargo Bank, four volunteer fire companies, a brass band, railroad, miners' and mechanics' union, several daily newspapers, and a jail. At its peak, 65 saloons lined Main Street, which was a mile long. Murders, shootouts, barroom brawls, and stagecoach holdups were regular occurrences.

As with other remote mining towns, Bodie had a popular, though clandestine, red light

district on the north end of town. There is an unsubstantiated story of Rosa May, a prostitute who, in the style of Florence Nightingale, came to the aid of the town menfolk when a serious epidemic struck the town at the height of its boom. She is credited with giving life-saving care to many, but after she died, was buried outside the cemetery fence.

Bodie had a Chinatown, the main street of which ran at a right angle to Bodie's Main Street. At one point it had several hundred Chinese residents and a Taoist temple. Opium dens were plentiful in this area.

Bodie also had a cemetery on the outskirts of town and a nearby mortuary. It is the only building in the town built of red brick three courses thick, most likely for insulation to keep the air temperature steady during the cold winters and hot summers.



The cemetery includes a Miners Union section, and a monument erected to honor President James A. Garfield. The Bodie Boot Hill was located outside of the official city cemetery. On Main Street stands the Miners Union Hall, which was the meeting place for labor unions. It also served as an entertainment center, hosting dances, concerts, plays, and school recitals. It now serves as a museum.

Decline

The first signs of decline appeared in 1880 and became obvious toward the end of the year. Promising mining booms in Butte, Montana, Tombstone, Arizona, and Utah, lured men away from Bodie. The get-rich-quick, single miners who came to the town in the 1870s moved on to these other boomtowns, and Bodie developed into a family-oriented community. In 1882 residents built the Methodist Church (which still stands), and the Roman Catholic Church (burned in 1928). Despite the population decline, the mines were flourishing, and in 1881 Bodie's ore production was recorded at a high of \$3.1 million. Also in 1881, a narrow-gauge

railroad was built, called the Bodie Railway & Lumber Company, bringing lumber, cordwood, and mine timbers to the mining district, from Mono Mills south of Mono Lake.



During the early 1890s, Bodie enjoyed a short revival from technological advancements in the mines that continued to support the town. In 1890, the recently invented cyanide process, promised to recover gold and silver from discarded mill tailings, and from low-grade ore bodies that had been passed over. In 1892, the Standard Company built its own hydroelectric plant approximately 13 miles away at Dynamo Pond.

The plant developed a maximum of 130 horsepower and 3,530 volts alternating current, to power the company's 20-stamp mill. This pioneering installation marked the country's first transmissions of electricity over a long distance.

In 1910, the population was recorded at 698 people, which were predominantly families who decided to stay in Bodie instead of moving on to other prosperous strikes.

The first signs of an official decline occurred in 1912 with the printing of the last Bodie newspaper, *The Bodie Miner*. In 1913, Bodie was described as a "mining town, which is the center of a large mineral region". They referred to two hotels and a railroad operating there. In 1913, the Standard Consolidated Mine closed.

Mining profits in 1914 were at a low of \$6,821. James S. Cain bought everything, from the town lots to the mining claims, and reopened the Standard mill to former employees, which resulted in an over \$100,000 profit in 1915. However, this financial growth was not in time to stop the town's decline.

In 1917, the Bodie Railway was abandoned and its iron tracks were scrapped. The last mine closed in 1942, due to War Production Board Order L-208, shutting down all non-essential gold mines in the United States during World War II. Mining never resumed after the war.

Bodie was first described as a "ghost town" in 1915. In a time when auto travel was on the rise, many travelers reached Bodie via automobiles. The San Francisco Chronicle published an article in 1919 to dispute the "ghost town" label.

Historical population		
Census	Pop.	%±
1880	5,417	—
1890	779	−85.6%
1900	965	23.9%
1910	698	−27.7%
1920	110	−84.2%
1930	228	107.3%
1940	90	−60.5%
1950	0	−100.0%
1951-2018 (est.)	0	

By 1920, Bodie's population was recorded by the US Federal Census at a total of 120 people. Despite the decline and a severe fire in the business district in 1932, Bodie had permanent residents through nearly half of the 20th century. A post office operated at Bodie from 1877 to 1942.

Ghost Town and Bodie State Historic Park

In the 1940s, the threat of vandalism faced the ghost town. The Cain family, who owned much of the land, hired caretakers to protect and to maintain the town's structures. Martin Gianettoni, one of the last three people living in Bodie in 1943, was a caretaker.

Bodie is now an authentic Wild West ghost town.

The town was designated a National Historic Landmark in 1961, and in 1962 the state legislature authorized creation of Bodie State Historic Park. A total of 170 buildings remained. Bodie has been named as California's official state gold rush ghost town.

Visitors arrive mainly via SR 270, which runs from US 395 near Bridgeport to the west; the last three miles of it is a dirt road. There is also a road to SR 167 near Mono Lake in the south, but this road is extremely rough, with more than 10 miles of dirt track in a bad state of repair. Due to heavy snowfall, the roads to Bodie are usually closed in winter.

Bodie is a popular destination for organized night photography, emphasizing the eerie nature of the park.



Today, Bodie is preserved in a state of arrested decay. Only a small part of the town survived, with about 110 structures still standing, including one of many once operational gold mills. Visitors can walk the deserted streets of a town that once was a bustling area of activity. Interiors remain as they were left and stocked with goods. Littered throughout the park, one can find small shards of china dishes, square nails, and an occasional bottle, but removing these items is against the rules of the park.

The California State Parks' ranger station is located in one of the original homes on Green Street.

In 2009 and again in 2010, Bodie was scheduled to be closed. The California state legislature worked out a budget compromise that enabled the state's Parks Closure Commission to keep it open. As of 2022, the park is still operating, now administered by the Bodie Foundation.

Climate

Bodie is a rare example of the dry-summer subarctic climate, with hot-to-freezing summers and long, snowy winters, and is part of USDA Plant Hardiness Zone 5. Winds can sweep across the valley at close to 100 miles per hour, and nights remain cold even through the summer, often dropping well below freezing throughout the year. Bodie has an average of 303 nights below freezing per year, and no month has ever been completely frost-free.

The harsh weather is due to a particular combination of high altitude (8,400 feet), and a very exposed plateau, with little in the way of a natural surrounding wall to protect the long, flat piece of land from the elements.

Plenty of firewood was needed to keep residents warm through the long winters. Bodie is not located in a forest, so lumber had to be imported from Bridgeport, Benton, Carson City, or Mono Mills. The winter of 1878 – 79 was particularly harsh and claimed the lives of many residents.





February, 2024 Cowboy Swap Meet
If interested, contact seller & arrange swap, pictures, etc.

Seller:

Prairie Dawg AKA Lou Polsinelli

LPOLSI@yahoo.com 216-334-9749

#1 -Dillon, Lyman, and Frankfort Arsenal Brass vibrators \$20 each

#2 -- Dillon, RCBS, and Frankfort Arsenal Rotary Case/Media Separators \$20 each

#3 -- Media -- Corncob & Walnut

Seller: Les Grace aka Woodfox 419-344-0490 woodfox45@gmail.com

CZ Sharptail 20" hammerless Coach gun Long Hunter action job 12 ga. like new shot in one match with hard case \$1250.

Seller: Lucky 13 AKA Jerry Newman. jdnewman@hughes.net

Uberti 1873 -- 45 caliber, 24 inch barrel, short stroke. \$1300.

Frontier Lone Rider (chasv1948@hotmail.com)

4 Lb Unopened Container Alliant American Select Smokeless Gun Powder **\$125.00**

1 Lb Unopened Container Hodgdon Triple Seven FFG \$25.00

Hornady Shell Plates for the AP Lock-n-Load Progressive Press

1 Never Used

2 Never Used

6 Never Used

16 Never Used **#1 through #45 in original Case**

32 Never Used

36 Never Used

45 Shell Plate for 45acp Lightly Used

Hornady Pro-Jector 7 Progressive Press, Very Good Condition \$75.00

RCBS Used Reloading Dies: 223 Rem, .44Mag, .357Mag, & 25/06 \$20.00 each

Reloading Dies Sets -- Never Used

- Hornady Custom Grade **38/257Mag** \$75.00
- Hornady Durochrome **38/357Mag** \$50.00
- Pacific Durochrome **38 Spl** \$50.00
- Dillon Precision **38/357Mag** \$75.00
- Lyman 4-Die Set **38/357 Mag** \$75.00
- RCBS **357 Mag** \$50.00

RCBS 3-Die Set 357 Mag SWC \$50.00

- No Box Lyman 3-Die Set **38/357 Mag** \$50.00
- Lyman All American **25-06** \$50.00
- RCBS **25-06** \$35.00

RCBS F L Die Set 25-06 \$35.00

- Lyman 3-Die Set **45-70** \$50.00
- RCBS 3-Die Set CARB **45-70** \$75.00
- Redding **45-70** Titanium Carbide \$75.00
- LEE Factory Crimp Die **45-70** \$20.00
- LEE Factory Crimp Die **45-70** \$20.00
- RCBS 3-Die Set Steel **44-40 WIN** \$85.00
- RCBS 3-Die Set CARB TC Set **9MM LUGER** \$75.00
- Lyman 4-Die Set **9MM LUGER, RN, TRC** \$85.00
- RCBS 3-Die Set CARB Set **45 COLT** \$55.00
- RCBS 3-Die Set CARB Set **45 COLT** \$55.00
- RCBS 3-Die Set CARB Set **45 COLT** \$55.00
- RCBS 3-Die Set CARB Set **44-Mag/44 Spl** \$85.00
- RCBS 3-Die Set CARB Set **44 Mag SWC** \$85.00

RCBS 3-Die Set 44 Mag SWC \$50.00

- RCBS De-Cap Die **.27 - .45 Cal Heavy Duty** \$40.00
- RCBS 3-Die Set **45-90, 2.4SS** \$70.00
- RCBS Small Base Die Set **.223 REM** \$50.00

RCBS F L Die Set 223 REM \$40.00

LEE RGB Dies 223 REM \$25.00

- LEE Sizing Dies **.311 and .452** \$35.00
- LEE Factory Crimp Die **44-40WIN** \$20.00
- LEE 3-Die Set **.45 ACP** Titanium Nitride \$45.00
- LEE Deluxe Pistol Die Set **.45 ACP** \$50.00
- LEE TAPER Crimp Die **.45 ACP** \$20.00
- RCBS 3-Die Set **.45 ACP** \$70.00
- Hornady Custom Grade 3-Die Set **.45 ACP Taper Crimp Titanium Nitride** \$65.00

- Hornady Custom Grade 3-Die Set **32 S&W, H&R Mag** Titanium Nitride **\$50.00**
- Hornady Custom Grade 3-Die Set **243 WIN** Full Length Titanium Nitride **\$60.00**
- Hornady Custom Grade 3-Die Set **6.5 Creedmoor** Full Length Titanium Nitride
- LEE **38 S&W, 38 COLT** **\$45.00** **\$50.00**
- No Box Lyman 2-Die Set **30-06** **\$50.00**
- LEE 8MM Mauser 8 X 57 **\$50.00**
- LEE 8MM Mauser 8 X 57 **\$50.00**

DILLON 550 Parts

New Powder Die #20064 550/650 **\$10.00**

2 - Die Tool Heads **\$20.00 each**

3 Dillon Conversion Kits: 45 ACP **\$35.00**, 45-70 Gov't **\$30.00**, 38/357 **\$35.00**

2 – Soft Foam Pads for the Dillon Hndle **\$5.00**

Dillon 45-70 Conversion Kit **\$30.00**

Dillon 45 ACP Conversion Kit **\$35.00**

Dillon 38/357 Mag Conversion Kit **\$35**

45-70

45-70 Government Brass **\$30.00 per (25)**

45-70 Government Brass **\$50.00 per (50)** (I have two bags of 50)

45-70 Gov't Brass with Winchester Primers, installed **\$70.00** (I have a bag of 50)

HORNADY - LOCK-N-LOAD SONIC CLEANER

I have two (2) of these. The boxes have never been opened. \$75.00 each
100-010-327WB

Three leather Wrist Roping Sleeves/Cuffs. \$25.00 each

Revolvers

Ruger Vaquero 510-45445 **NM Vaquero** **357 Magnum** Revolver
Stainless Steel
NIB Ruger New Model Vaquero. Vaquero Revolver. Fixed Barrel Length - 5 1/2" with
fixed sights on a stainless steel frame with Checkered Black Grips. Original box and paper
work is included. 22 OCT 2020 **NEVER FIRED** **\$900**

Ruger Vaquero 57-37510 **Vaquero** **45 Long Colt** Revolver Stainless
Steel
USED Ruger Vaquero Catalog Number KBNV-45, Model Number 00555, 6 shot,
7 1/2 inch Barrel, High Gloss-Stainless Steel with Rosewood Grips, ejector rod. Mfd: 1999.
\$850

Ruger Vaquero 58-29684 **Vaquero** **45 Long Colt** Revolver Stainless
Steel
USED Ruger Vaquero Catalog Number KBNV-45, Model Number 00555, 6 shot,
7 1/2 inch Barrel, High Gloss-Stainless Steel with Rosewood Grips, ejector rod. Mfd: 2002.
\$850

Ruger New Model 650-42808 **Single Six SSM** **32 H&R Mag** Revolver
Stainless Steel
USED Ruger New Model Single-Six revolvers in .32 H&R Mag, **4 5/8** inch Barrel, High
Gloss-Stainless Steel with Faux Ivory Grips, ejector rod and Fixed Sights. Nice revolver, it is
used and has been fired, but overall it is in nearly minty shape with very minor handling wear.
\$900

Ruger New Model 650-49327 **Single Six SSM** **32 H&R Mag** Revolver
Stainless Steel
USED Ruger New Model Single-Six revolvers in .32 H&R Mag, **4 5/8** inch Barrel, High
Gloss-Stainless Steel with Faux Ivory Grips, ejector rod and Fixed Sights. Nice revolver, it is
used and has been fired, but overall it is in nearly minty shape with very minor handling wear.
\$900

A. UBERTI UG7478 **1873 Cattleman II** **44-40** Revolver Brass
NIB **Uberti 1873 Cattleman II NM Brass 5 1/2" .44-40 Stock No.:** 17-1500 Single Action
Revolver. **Description:** Uberti/Stoeger 1873 Cattleman II NM Brass **5 1/2" Barrel (Frame**
Finish: Blue, Case-Hardened Frame), It has a Brass backstrap and Trigger guard. Improved
Retractable Firing Pin, **UPC:** (356310), **Caliber:** .44-40 (.427), **Brand:** Uberti/Stoeger, **Grips:**
1-pc Walnut. Replaced the stock grips with Black Plastic Berretta Stampede Grips from Dawg.
Installed Wolf Springs, bought New, used in two Matches. 26 JAN 2019 **\$525.00**

A. UBERTI UG7625 **1873 Cattleman II** **44-40** Revolver Brass
NIB **Uberti 1873 Cattleman II NM Brass 5 1/2" .44-40 Stock No.:** 17-1500 Single Action
Revolver. **Description:** Uberti/Stoeger 1873 Cattleman II NM Brass **5 1/2" Barrel (Frame**

Finish: Blue, Case-Hardened Frame), It has a Brass backstrap and Trigger guard. Improved Retractable Firing Pin, **UPC:** (356310), **Caliber:** .44-40 (.427), **Brand:** Uberti/Stoeger, **Grips:** 1-pc Walnut. Replaced the stock grips with Black Plastic Berretta Stampede Grips from Dawg. *Installed Wolf Springs, bought New, used in two Matches.* 26 JAN 2019 **\$525.00**

Pistols

GLOCK MVB920 **G22-G3** 40mm Pistol Matte Black

USED Glock G22-Generation 3, chambered in 40mm. Made in Austria & Lifetime warranty! This is a spectacular find. It shows some signs of being fired a few times, but it mostly looks like it was carried [and based on the amount of lint inside the barrel] and not cleaned frequently. The only significant wear I could find was on the slide release. With an adjustable rear sight. 10 MAR 2017 **\$425.00**

GLOCK WHT163 **G22-G3** 40mm Pistol Matte Black

USED Glock G22, chambered in 40mm. Made in Austria & Lifetime warranty! Adjustable rear sight. Matte black slide, polymer frame, 3 Magazines and Textured Grip & Reversible Mag Catch in Factory Box. It is in excellent condition with minimal signs of cosmetic wear. There are a few light scratches here and there but they are not noticeable or significant. The bore is in great shape, it's nice and shiny and the rifling looks good. All the Mags and Extras are in great shape as well. **\$425.00**

Rifles

Rossi PUMA M92SS092399 MODEL 92 45 Long Colt Lever Action Stainless Steel

NIB PUM52011 PUMA M92, (1892), Caliber 45 Long Colt, **24 Inch Octagon** Stainless Steel Barrel, 37 ½ Inch, 10 Round Capacity (10 + 1), Dark Wood Stock, imported by LSI (Legacy Sports). 45 Colt Lever Action w/ Walnut Stock. Specifications: Trigger: Single Stage, Safety: Thumb Safety, Weight: 6.1 lbs. **NEVER FIRED \$750**

Rossi PUMA M9266062164 MODEL 92 45 Long Colt Lever Action **Brass/Stainless Steel**

NIB Puma 92 Octagon **Stainless / Brass 24"** 45 LC NEW! Factory New & unfired Puma M-92, still in the Box, Stainless Octagon barrel/ Brass receiver lever-action rifle in .45 Long Colt. **24" Octagon** SS bbl w/ adjustable rear & steel blade front sights. Straight hardwood rifle stock. part # 52012 PUM52012 PUMA M92, (1892), Caliber 45 Long Colt, **24 Inch Octagon.** 37 ½ Inch, 10 Round Capacity (10 + 1), Dark Wood Stock. **NEVER FIRED \$750**

Rossi PUMA M92SS092394 MODEL 9245 Long Colt Lever Action
Stainless Steel

USED PUM52011 PUMA M92, (1892), Caliber 45 Long Colt, **24 Inch Octagon**
Stainless Steel Barrel, 37 ½ Inch, 10 Round Capacity (10 + 1), Dark Wood Stock, imported by
LSI (Legacy Sports). 45 Colt Lever Action w/ Walnut Stock. Specifications: Trigger: Single
Stage, Safety: Thumb safety, Weight: 6.1 lbs. **\$700**

A. Uberti Sporting Rifle “**Yellowboy**” W52378 **1866 38 Spl** Lever Action Brass &
Blue

Cody-Matic NIB Model “66” Short Rifle “**Yellowboy Sporting Rifle**” imported by Taylors.
Type - Lever action repeater, Caliber - .38 Special, Tube Magazine capacity - 10, **Barrel - 20”**
Full Octagon with Blue Finish, Sight - adjustable Buckhorn rear with Blade Front Sight, Finish
– Brass Receiver and Buttplate; color case hardened finger lever and hammer; polished blue
magazine, loading gate, trigger, and all screws, Straight Walnut Stock and fore-end with gloss
finish, Weight 7.59 Lbs. (Sporting Rifle), **Number of Grooves: 6 Twist: Right. Slicked-up**
by Don Jones AKA: Cody Conagher, Berkeley Springs, WV. Fabricated a Short Stroke
Lever Action and replaced the Front Sight. NEVER FIRED \$1350

Remington S6395066 700 VLS 22-250 Bolt Action Stainless

USED REM 700 VLS. Overview: Built on the famous Model 700™ cylindrical
action,

Remington® **Varmint** rifles are the most accurate production rifles Remington produces. The
Model 700™ VLS (Varmint Laminated Stock) delivers tack-driving, varmint rifle accuracy
with a handsome, resin-impregnated, laminated stock. Includes Monte Carlo cheekpiece, and
a wide, flat, beaver tail shape fore-end for enhanced stability. The rigid Model 700™ action
is mated with a vibration-dampening 26-inch stainless steel heavy varmint barrel.

Key Features: 26" heavy contour barrel (0.820" muzzle O.D.) for the ultimate in long-range
accuracy. Concave target-style barrel crown. Laminated stock with beavertail fore-end.

Bought 28 March 2015 from Ray at the Morgantown Gun Show. **\$1300.00 \$1100.00**

HOWA B159144 1500 22-250 REM Bolt Action Stainless

USED **HOWA Model 1500 22-250 Rem. Laminated Stock with a 24 inch Heavy**
Stainless Steel Barrel. A very nice rifle with a great bore. Shows very little hunting use.
10/23/2013 **\$1000.00**

Traditions Pedersoli R011693 Rolling Block 45-70 Gvt Single Shot
CC & Blue

NIB Traditions (made by D. Pedersoli) Rolling Block Sporting Rifle chambered in 45-70.
This gun is new and has never been fired. The guns exterior is in great shape. The guns’ metal
finish as-well-as the walnut stock look great. This rifle has a 30” Octagonal Barrel and being a
new gun the bore is in great shape. Includes factory plastic gun case and papers.

NEVER FIRED \$1000.00

A. Uberti S06986 **1885 Hi-Wall 45-70 Govt** Lever Action Case-Hardened & Blue

CAT. 1017 Uberti **1885 Hi-Wall 45-70, 30"** Octagon Barrel and an adjustable Trigger. This rifle is in very good shape. It has a tang sight and a front Uberti Globe Sight. It is marked Stoeger Accokeek MD. **\$1250 \$1100**

A. Uberti/Cimarron S05231 **1885 High-Wall 45-70 Govt** Lever Action Case-Hardened & Blue

Cat. #10178 An Uberti **1885 High Wall .45-70** Winchester single shot rifle with a falling block action and **Double Set Triggers**. This firearm has a **30"** octagon barrel with an excellent bore and a storage compartment in the end of the walnut stock. The wood has some dings and scratches. Metal shows some very light finish wear. The barrel has been Drilled & Tapped near the end of the barrel for a scope block. **\$1200**

A. Uberti/Cimarron S08298 **1885 Low Wall .22LR** Lever Action Case-Hardened

1885 Low Wall, Cat: 12670, single shot rifle manufactured in Auberti, Italy by Uberti for **Cimarron** Repeating Arms and chambered in .22LR. It is a Copy of an 1885 Winchester with a **30"** octagon barrel. Case hardened receiver. Crescent butt plate. Mint condition. **\$1000**

Taylor's & Co. SH5197 #138D - **1874 Sharps Sporting Rifle 45-90 WCF SS CC** & Blue by **ARMI SPORT** "Old Faithful" Buffalo Rifle, Sliding Breechblock Sharps with a 34 inch Octagon barrel. **Double set triggers**. Like new, excellent bluing, wood is great. Hartford Style Pewter Tip. Ladder-type rear sight, blade front. Added Taylor's and Company, ACC5506A, Long Range Creedmore style tang sight, Case Colored, 2 1/4 in Base and Front Globe Sight. **\$1000**

Henry Repeater 168076H **H001 22 S-L-LR** Lever Action Blue

Henry Model H001 Lever Action Rifle, American Walnut Stock, 18 1/4" Barrel, .22 features side ejection, an adjustable rear sight, a hooded front sight and the receiver is grooved for a scope mount. The blued steel barrel features multiple groove rifling, making the Henry Lever Action .22 extremely accurate. The barrel length is 18 1/4", the overall length is 36 1/2", and it weighs only 5.5 pounds. The magazine capacity 22 S-L-LR is 15 rounds (LR), 17 rounds (Long), and 21 rounds (Short). The action is exceptionally smooth. **The bluing and wood are in excellent condition.** **\$300**

CVA 026719 **Kentucky Rifle 45** Percussion Walnut-Tone

Connecticut Valley Arms PR401 - Kentucky Rifle, Percussion Sidelock, Musket Cap Ignition adjustable Sear, 45 Caliber, Black powder or Pyrodex Only. Stock: Polished, walnut-tone hardwood. Barrel: .45 cal (.451 Bore Diameter), Octagon, 7/8" across flats. Rifled 1 turn in

66" for patched ball accuracy. Overall Length: 50", Brass Front Blade Sight and an Open Dovetailed Rear Sight. **NEVER FIRED** **\$250.00**

Savage K893201 **12 308 Win** Bolt Action Black Matte
USED **Savage Arms Model 12 in 308 Win.** The Savage Arms Model 12 308 Win features a 26-inch carbon steel **bull barrel**, Black Matte Finish, fiberglass stock, no sights, Target Accu-Trigger, topload detachable box magazine and an oversized bolt handle. **\$1000.00**

Remington G6842930 **700 SPS 243 Win.** Bolt Action Matte Blue
USED Remington Model 700 SPS Varmint, bolt action rifle chambered in .243 Win. This rifle features a matte blued finish on the **Varmint (heavy barrel)**, receiver, trigger guard and hinged floor plate, a 26 inch heavy barrel, the receiver is drilled and tapped for scope mounts and has a 2 piece set of "Weaver" scope mount bases installed, a black synthetic stock with textured gripping surfaces and a vented beavertail forend, a 4 round internal magazine with a hinged floorplate, a rubber recoil pad and sling swivel studs are installed. The finish on the barrel shows a couple light scuffs and a light scratch on the right hand side about 3 inches down from the muzzle, the floor plate and trigger guard show some light nicks in the finish, the stock shows a few dents, dings and handling marks scattered throughout, the bore is in excellent condition. **\$800.00**

Remington G7058241 **700 BDL 243 Win.** Bolt Action Matte Blue
USED Remington Model 700 SPS Varmint, bolt action rifle chambered in .243 Win. This rifle features a matte blued finish on the **Varmint (heavy barrel)**, receiver, trigger guard and hinged floor plate, a 26 inch heavy barrel (with some scratches), the receiver is drilled and tapped for scope mounts. It has a **black synthetic stock** with textured gripping surfaces and a vented beavertail forend, a 4 round internal magazine with a hinged floorplate, a rubber recoil pad and sling swivel studs are installed. Originally the bolt was black, but someone tried to remove the paint to make the bolt silver. (They did not do a good job). **\$800.00**

Rhoner Sportwaffer Wiesbach 16288 **22 LR** Bolt Action Blue
USED Rhoner Sportwaffer Wiesbach 22LR. An Anschutz competitor that was put out of business by Anschutz. The barrel is 23.5", it has an adjustable trigger set at 8oz. There are weights installed in the stock under the rail. It shoots like an Anschutz Gun, is like new and comes with a Tasco 24x scope. **\$850.00**

Shotguns

HUGLU for CZ 05C0908 **Durango 12 Ga** SXS Double Wide Blue
HUGLU Durango 12GA Coach Gun manufactured by Huglu in Turkey and Imported by CZ. Double BBL SXS shotgun with a 3" chambers and has screw in choke capability. The stock is in good condition with no major scuffs or scratching. The blued finish is in good condition with

no wear spots. This shotgun has been thoroughly inspected but not test fired. In hard case.
\$850

Stoeger Receiver Serial No. 468457 **12 Ga** Side/Side Double Barrel Blue
Stoeger Coach Gun (Gaucha IGA), 12g, **18 Inch Blue**. Gauge: 12, Trigger: Double, Front
sight: Brass Bead, 3 Inch Chamber. E. R. EMANTINO on Made in Brazil, imported by Benelli.
Added Stoeger Recoil Pad. 14 AUG 2020. **\$500**

Stoeger 522853-04 Uplander 12 Ga Side/Side Double Barrel Stainless & Blue
E.R. AMANTINO STOEGER UPLANDER SXS COACH GUN 12GA. **Uplander Supreme
Shotgun**, Brushed Silver Receiver and **26 Inch Blue Barrels**, Trigger: Double, Front sight:
Brass Bead, 3 Inch Chamber. This firearm shows just some very light signs of use and just a
few super light dings on the wood and really nothing major and is in excellent cosmetic and
working condition with no issues or problems. OCT 2022 **\$550.00**

EAA ASTRA 19-03-017-98 Bounty Hunter/Coach Gun 12 Ga Side by Side/Double
Barrel Blue
EAA Bounty Hunter, SXS, 12ga, Hammered Coach shotgun 22" barrels and bead front sight
chambered for 2 3/4" – 3" shells with a Metal Butt Plate. Lockup is tight and the bores are
bright & shiny. Completely Stock. **\$500**

EAA 994327904 B Bounty Hunter/Coach Gun 12 Ga Side/Side Double Barrel
Blue
Baikal Hammered (Rabbit Eared), Model IZH-43K. Blue 20" Coach Gun Side-By-Side
Double Barrel Shotgun, 12 GA with Cylinder Bore Chokes, Butt Pad. A very good condition
Baikal Hammered double 12ga SxS **Bounty Hunter** shotgun. Has a LASERED Engraving of a
Cowboy on the right side of the stock and decorative Side Plates with a Bull Rider on each side.
Has Light Wood Furniture. From James Peoble with Johnny Meadows at Camp Verde Gun and
Repair. Completely Stock. **\$500**

Winchester 46243 Model 12 12 Ga Pump Blue
Winchester Model 1912 Pump Action Shotgun Manufactured in **1914**. Has handling marks.
The barrel is about **28 inches, Full**, with choke compensator (Poly Choke) and a Black Shock
Absorber. **\$500**

Winchester "D" 385001 1897 12 Ga Pump Blue
An ORIGINAL **Winchester 1897 Takedown Model** Pump Shotgun Mfg in **1908**. This gun is
used but in good condition. It has been re-blued and the wood has been refinished. The **Full
Choke** barrel has been cut down to 25-1/2" and the LOP is 13-1/4". The stock has dents and
dings but no cracks. The action is tight and feeds from the magazine tube. **\$700**

Winchester 77482 24 12 Ga Side/Side Double Barrel Blue
Winchester Model 24 Shotgun. 2-3/4" Chambers Full Choke and Modified. Mfg Date: **1950**.

The Winchester Model 24 is a side-by-side shotgun which went into production in 1939 and stayed in the line until 1958. The semi-beavertail forend is held in place by spring tension, and the semi-pistol grip stock is amorphous in shape. It is a 12ga shotgun which weighs about 7-1/2 pounds, measures 46-1/2" in overall length and has a 14-1/4" length of pull. Approximate drop is 1-1/2" at comb and 2-1/2" at heel. **\$500**

Winchester 109543 24 **12 Ga** Side/Side Double Barrel Blue
Winchester Model 24 SXS Shotgun. 2-3/4" chambers Full Choke and Modified. Mfg date: **1952**. The Model 24 competes with the Stevens 311 and Savage/Fox Model B as an affordable, utility SXS and a total of over 116,200 were Mfgd. The Model 24 is a true hammerless gun, as opposed to having concealed hammers like most double guns, since it is striker fired. It was produced only as a field grade gun with blued receiver and barrels, wide 7/16" raised solid rib, smooth black walnut stock with lacquer finish, double triggers, and spring powered extractors that elevates the shells when the gun is opened. The forged steel receiver body of the Model 24 is rounded. The Model 24 was designed with two lumps, one centered beneath each barrel, leaving a tunnel of space between the two lumps. It has a clean breech face and is held closed by a single underbolt, that engages a notch in the double barrel lumps. In the area between the 24's dual lumps is a cocking slide and the extractor. The Model 24 is about as wide through the breech and receiver as a SXS gun can be. The weight is about 7-1/2 pounds. It is a 12 Ga gun with 30" barrels. It measures 46-1/2" in overall length and has a 14-1/4" length of pull. Approximate drop is 1-1/2" at comb and 2-1/2" at heel. **\$500**



News & Notes

Six Stages

We shoot six stages at Tusco. A few people have told us that they drive a good distance to shoot at Tusco and would like to shoot as much as possible.

Obviously we only have room for five shooting bays. So what we do is shoot the first stage you start on twice. Consider it a warm up stage. Only five stages will be scored. You can take your best time on your first stage. If you don't want to shoot it twice you do not have to. This would provide more shooting for our shooters.

New SASS Magazine

With the new release of the SASS Quarterly Cowboy Chronicle, I once again would like to start collecting any unwanted issues of the magazine. We will use these for our promotional events, like our Tusco Long Riders' Day at Kames Sports. Please either black out or cut off your name and address or I will do it before they are passed out. Thank you!

Facebook Page

When you make a post about Tusco or share pictures on Facebook, include #TuscoLongRiders. Let everyone see what we are all about.

News & Notes

New Shooters Shoot for Free at Tusco

The Tusco Long Riders will be offering **FREE SHOOTS to ALL FIRST TIME SHOOTERS AT TUSCO**. This is **ONLY** for a shooter's first ever shoot at Tusco. (*this is only for monthly matches, excluding High Noon 3-day Shoot in October, and the Charity Shoot in November.)

Cowboy Swap Meet at Monthly Shoots

As a reminder, feel free to bring your old Cowboy Gear, Guns and Equipment to sell at our monthly shoots. It's a good opportunity to sell some of your unwanted stuff to your fellow shooters. Your items are your responsibility.

Pre-Paid Shoots

Looking for that perfect Gift for your Cowboy Friends and Family? How about a Pre-paid Shoot to a Tusco Monthly Match. They cost \$10.00 each at a shoot or they can be mailed for \$10.50. Contact Buckaroo Bubba at pittfandwr@aol.com or 330-348-5637 if you would like to purchase them.

Help Wanted at Tusco

If you are available to help set up target stands/props before our shoots it would be greatly appreciated.



www.custommadesportwear.com

VAUGHAN'S
CUSTOM MADE SPORT WEAR

330-877-9677

Visit our store
6125 Smith-Kramer
Hartsville, OH 44632

VISA

- JACKET, GLOVES, CHAPS, ETC. FROM YOUR LEATHER OR OURS
- TACK REPAIR AND LEATHER ALTERATIONS
- HOLSTERS, BELTS, LEATHER FOR CRAFTS
- STEER HIDE AND SHEEPSKIN RUGS

MADE IN THE U.S.A.



PATRIOT CASTING

Products made by Patriots!

3400 Bruceton Ave, Columbus, OH 43232

2020 High Noon at Tusco Sponsor and Vendor

Bullets by SASS and Tusco member -- Lifer

614-736-1077
lifermike@gmail.com

APPALACHIAN BULLET COMPANY

Harold "Doc" Adams & Miss Lizzie Schrum

740-226-4671

cubdriver@roadrunner.com

2020 High Noon at Tusco Sponsor and Vendor

Lead Bullets by, SASS and Tusco Members
Harold "Doc" Adams and Miss Lizzie Schrum

THE LORD'S POSSE
'Serving Christ the Cowboy Way'
www.facebook.com/TheLordsPosse



BARLEYCORN OUTFITTERS
Buy, Sell & Trade Firearms

MATT MASTOROVICH
Owner, FFL

Specializing in Cowboy Action
& Modern Firearms
Export, PA

724-468-6093 (Office)
724-757-2834 (Cell)
BarleycornOutfitters@gmail.com
BarleycornOutfitters.com



C-Cup's
by Cheryl

Custom Tumblers
Made to order
614-266-9559
C.Cup.sByCheryl@gmail.com



The logo for Double C Consulting & Project Management features the word "DOUBLE" in a decorative, serif font above a large, stylized horseshoe. Below the horseshoe is the letter "C" in the same decorative font. The entire logo is framed by ornate, symmetrical flourishes at the top and bottom.

*Carl Hart, President
Double C Consulting
& Project Management*

8117 Tollbridge Ct
West Chester, Ohio
45069
(m) 513.835.3037
Wm.C.Hart@gmail.com





Handmade Items Crafted With Care

www.designsbyscamper.com
designsbyscamper@gmail.com



Looking for a gift for a loved one or maybe a special treat for yourself? Look no further than Designs By Scamper. From sun catchers, to tumblers, to wall art, to games, we have you covered.



We love to personalize as well! If you are needing a special gift not seen on our website, please send us a message and we will work with you to see if we can make your vision come true!



A little bit about us



Jim & I have always wanted a family of our own. Although we love our 5 fur kids, we long for a baby. After learning we were unable to conceive a child, Jim and I decided to pursue the adoption of a newborn. Adoption costs are astronomical (anywhere from 25k to 50k or higher) and although we were able to raise some with our savings, GoFundMe page, and church donations, we are still lacking the funds needed to apply for a match. We decided to take our love of crafting and open a side business to hopefully raise some more funds for our future family. Designs By Scamper is a tribute to our pup Scamper who passed away in 2015 from cancer.

